



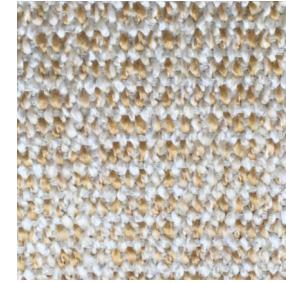
forest



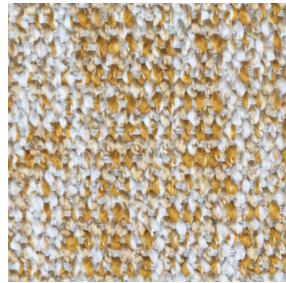
creme



natur



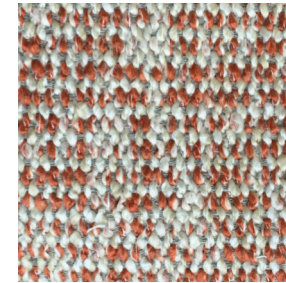
sand



curcuma



rose



teracotta



marine

Murcia

Strukturgewebe aus unterschiedlichen Garnen.

Stoffgruppe D

54 % PAC, 35 % PES, 11 % CO,

Scheuertouren: 50.000 Lichtechtheit: 5

Pillingbildung: 4 bis 5